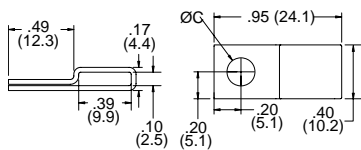




MTH1
Stainless Steel Tie Holder



- Specifications:
- Material: 304 Stainless Steel

See page 243 for Stainless Steel Cable Ties.

- Features:
- Low profile design
 - Mounts with a screw or rivet

Item No.	C Hole		Recommended Mounting Screw	Bulk Pack Qty.
	In	mm		
MTH1-1	0.180	4.5	#8 or M4	100
MTH1-2	0.210	5.4	#10 or M5	100
MTH1-3	0.270	6.8	1/4 or M6	100

FTH-27
Hook & Loop Cable Tie Mount



- Specifications:
- Material: UL94 V-2 Nylon 6/6
 - Color: See Chart

- Features:
- Mounts 1/2" RKW Hook and Loop Ties

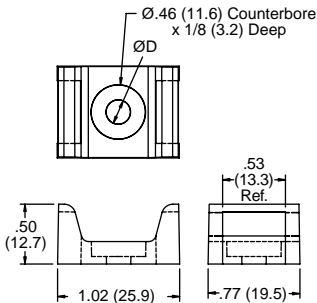


Figure 1

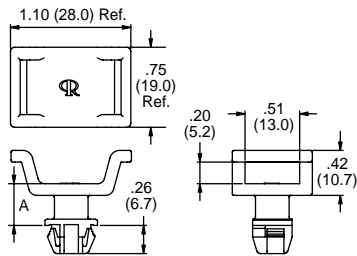
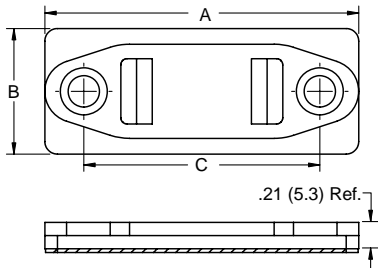


Figure 2

See pages 249 - 250 for Hook & Loop Cable Ties.

Item No.	Color	Accepts Hook & Loop Up To Width		Figure	Mounting Method	D		A		Panel Thickness		Bulk Pack Qty.
		In	mm			In	mm	In	mm	In	mm	
FTH-27-RS-01	Natural	0.510	13	1	#10, M5 or #12 Screw	0.205	5.2	—	—	—	—	1000
FTH-27-12-01	Natural	0.510	13	1	#10, M5 or #12 Screw	0.230	5.8	—	—	—	—	1000
FTH-27-1-01BK	Black	0.510	13	2	0.370 (9.5) Square Hole	—	—	0.120	3.0	0.030 - 0.080	0.8 - 2.0	500
FTH-27-2-01BK	Black	0.510	13	2	0.370 (9.5) Square Hole	—	—	0.390	10.0	0.030 - 0.080	0.8 - 2.0	500

FTH-RKW
Hook & Loop Cable Tie Mount



See pages 249 - 250 for Hook & Loop Cable Ties.

- Specifications:
- Material: Polyethylene
 - Color: Black

- Features:
- Mounts with adhesive or screws

Item No.	Accepts Hook & Loop Up To Width		Mounting Method	A		B		C		Bulk Pack Qty.
	In	mm		In	mm	In	mm	In	mm	
FTH-RKW-1	0.500	12.7	1/4" Screw	2.500	63.5	1.000	25.4	1.880	47.8	100
FTH-RKW-1A	0.500	12.7	Adhesive	2.500	63.5	1.000	25.4	1.880	47.8	100
FTH-RKW-2	1.000	25.4	1/4" Screw	3.250	82.6	1.500	38.1	2.620	66.5	100
FTH-RKW-2A	1.000	25.4	Adhesive	3.250	82.6	1.500	38.1	2.620	66.5	100